

# PowerPACS CR ONE®

## PowerPACS CR ONE® Advantages and Features

- Designed and implemented for the veterinary industry
- Complete out-of-the-box solution
- True web-based system
- Seamless workflow to acquire, view, archive, or burn CD/DVD
- Veterinary-specific image processing algorithms
- Significant cost savings from filmless operation
- Maintain a minimum of 50,000 CR studies online
- Able to acquire and display all DICOM images, including dental and cine loop ultrasound
- Can interface with most Practice Management (PM) system
- 24/7 customer support from live service personnel
- Product can be installed in one day, and is easy to use and maintain
- Reads imaging plates at the high resolution of 10 pixels/mm, for all image plate sizes
- Output is 50 plates per hour (14" x 17")
- Tabletop sized CR, so it can easily be placed at any location and also be mobile
- Special LED technology in the erasure unit means conserving electrical power and reducing operation costs

## PC SPECIFICATIONS:

### Standard Workstation

- Dell tower packaging with minimum of Intel Dual Core Processor 2.6 GHz, 2 GB RAM
- (2) 500 GB SATA Hard Drives in RAID 1 configuration
- 20X DVD Burner
- Integrated Video Display Driver Card
- 10/100/1000 BaseT Network Interface Card
- Windows XP Professional

### Monitor

- 20" Dell Widescreen Color Flat Panel Display

## CR SPECIFICATIONS:

### Throughput

- 35 x 43 cm (14 x 17") = approx. 50 plates/hour
- 24 x 30 cm (9.5 x 12") = approx. 57 plates/hour
- 18 x 24 cm (7 x 9.5") = approx. 60 plates/hour

### Dimensions and weight

- (W x D x H): 693 x 701 x 464 mm (27.2 x 27.6 x 18.2" Depth including input tray: 769 mm (30.3")
- Weight: approx. 98 kg (216.05 lbs)

### Greyscale resolution

- Data acquisition: 20 bits/pixel
- Output to processor: 16 bits/pixel

## CR PRODUCT DETAILS:

### Cassette Sizes and Spatial Resolution

- (2) 14" x 17" are included
- (2) 9.5" x 12" are included
- \* Also available in 7" x 9.5"

The Digitizer uses special cassettes with an embedded memory that store the data entered during identification. The built-in antenna card identifies the data by no-touch radio frequency tagging. ID data and images are linked from the beginning throughout the entire electronic processing system.

### Power

- Standby 120W, max 320W, 16A fuse 120V/60Hz (USA) Standby 120W, max 320W, 15A fuse

### Environmental effects

- Noise level: max. 65 dB (A)
- Heat dissipation: standby 120 W, max. 320 W



## About VETinfo SYSTEMS

VETinfo SYSTEMS is a division of RADinfo SYSTEMS, focused solely on the Veterinary and Equine Markets. VETinfo SYSTEMS has developed dynamic digital software solutions to enhance patient care in the veterinary industry, forging the future of how veterinarians will use digital imaging to advance their methods of diagnosis and treatment.

Digital imaging technology has transformed the veterinary industry, enabling veterinarians and veterinary radiologists to provide faster, more accurate diagnoses than ever before. VETinfo SYSTEMS brings a unique outlook to digital imaging, launching a full range of Windows-based, DICOM-compliant software that combines images with associated patient/study data and transmits them to the veterinarian's workstation, improving the delivery of both routine and emergency patient care. VETinfo SYSTEMS offers DICOM solutions that will integrate its products with veterinary practice management systems and multiple modalities, thereby eliminating the need for multiple software programs and databases. These easy-to-use software systems improve workflow and efficiency, adding value to each customer's practice.

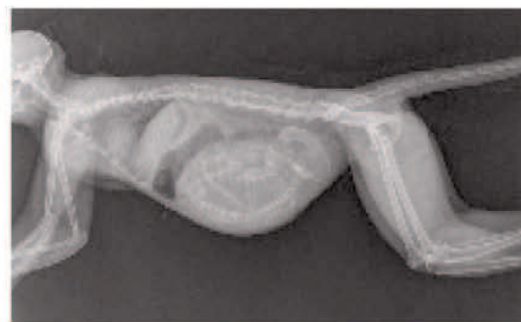
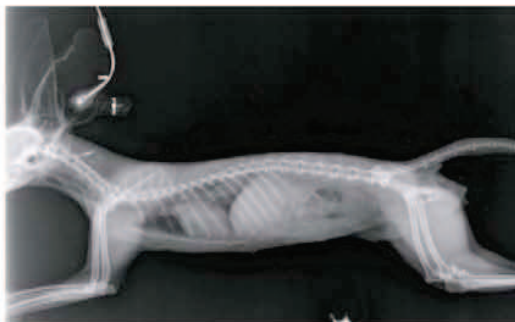
VETinfo SYSTEMS Veterinary Imaging Solutions

# PowerPACS CR ONE<sup>®</sup>

VETinfo SYSTEMS\* PowerPACS CR ONE<sup>®</sup> offers a cost-effective, complete system to provide your digital imaging and PACS solutions. **ONE** source for all of your digital needs.



VETinfo SYSTEMS introduces a web-based PowerPACS and CR solution for the veterinary digital imaging industry. This combination enables practices to acquire x-ray images through advanced CR technology features, including veterinary-specific image processing algorithms, along with standard DICOM modality.



All Star X-ray, Inc.

YOUR IMAGE IS OUR BUSINESS

(866) 381-4079

3029 East Randol Mill Road  
Arlington, TX 76011

[www.allstarxray.com](http://www.allstarxray.com)